

IBS



*A presentation by Dr J.D. Millar B.Sc. N.D.
Hom.*

APHORISM 1-4

1-The physician's high and only mission is to restore the sick to health, to cure, as it is termed.¹

2-The highest ideal of cure is rapid, gentle and permanent restoration of the health, or removal and annihilation of the disease in its whole extent, in the shortest, most reliable, and most harmless way, on easily comprehensible principle.

3-If the physician clearly perceives what is to be cured in diseases, that is to say, in every individual case of disease (*knowledge of disease, indication*),

if he clearly perceives what is curative in medicines, that is to say, in each individual medicine (*knowledge of medical powers*), and

if he knows how to adapt, according to clearly defined principles, what is curative in medicines to what he has discovered to be undoubtedly morbid in the patient, so that the recovery must ensue -

to adapt it, as well in respect to the suitability of the medicine most appropriate according to its mode of action to the case before him (*choice of the remedy, the medicine indicated*),

as also in respect to the exact mode of preparation and quantity of it required (proper dose), and the proper period for repeating the dose:

- if, finally, he knows the obstacles to recovery in each case and is aware how to remove them, so that the restoration may be permanent: *then he understands how to treat judiciously and rationally, and he is a true practitioner of the healing art* .

4- He is likewise a preserver of health if he knows the things that derange health and cause disease, and how to remove them from persons in health.

What is IBS

- ❖ Irritable bowel syndrome (IBS) is a common disorder that affects the large intestine (colon). Irritable bowel syndrome commonly causes cramping, abdominal pain, bloating, gas, diarrhea and constipation. IBS is a chronic condition that you will need to manage long term.
- ❖ Even though signs and symptoms are uncomfortable, IBS — unlike ulcerative colitis and Crohn's disease, which are forms of inflammatory bowel disease — doesn't cause changes in bowel tissue or increase your risk of colorectal cancer. Mayo Clinic

Main Types

- ❖ IBS - Diarrhea
- ❖ IBS- Constipation
- ❖ IBS-M Both Diarrhea and Constipation
- ❖ IBS- U Neither
- ❖ IBS -A Alternating Diarrhea and Constipation
- ❖ IBS - PI Post infective

Etiologic Factors

- ❖ Diet and Lifestyle
- ❖ Genetic and Epigenetic Predisposition
- ❖ Medications / Pharmaceuticals
- ❖ Post infective
- ❖ Toxins : environmental , chemicals pesticides fertilizers, heavy metals , volatiles ,
- ❖ , bacterials, viral and fungal
- ❖ Gut Brain Axis (CNS) (PNEI)
- ❖ Psychogenic Factors
- ❖ HPA Axis affects (ANS)
- ❖ Intestinal Dysbiosis: Fundamental Shift in the internal biome
- ❖ Motility Issue: neuromuscular systems
- ❖ Increased Gut permeability : mucous membranes and the immunological systems (PNEI)

Rule Outs

- ❖ Celiacs
- ❖ Microscopic Colitis
- ❖ IBD
- ❖ Bile malabsorbtion
- ❖ Bowel CA

The Micro-Biome

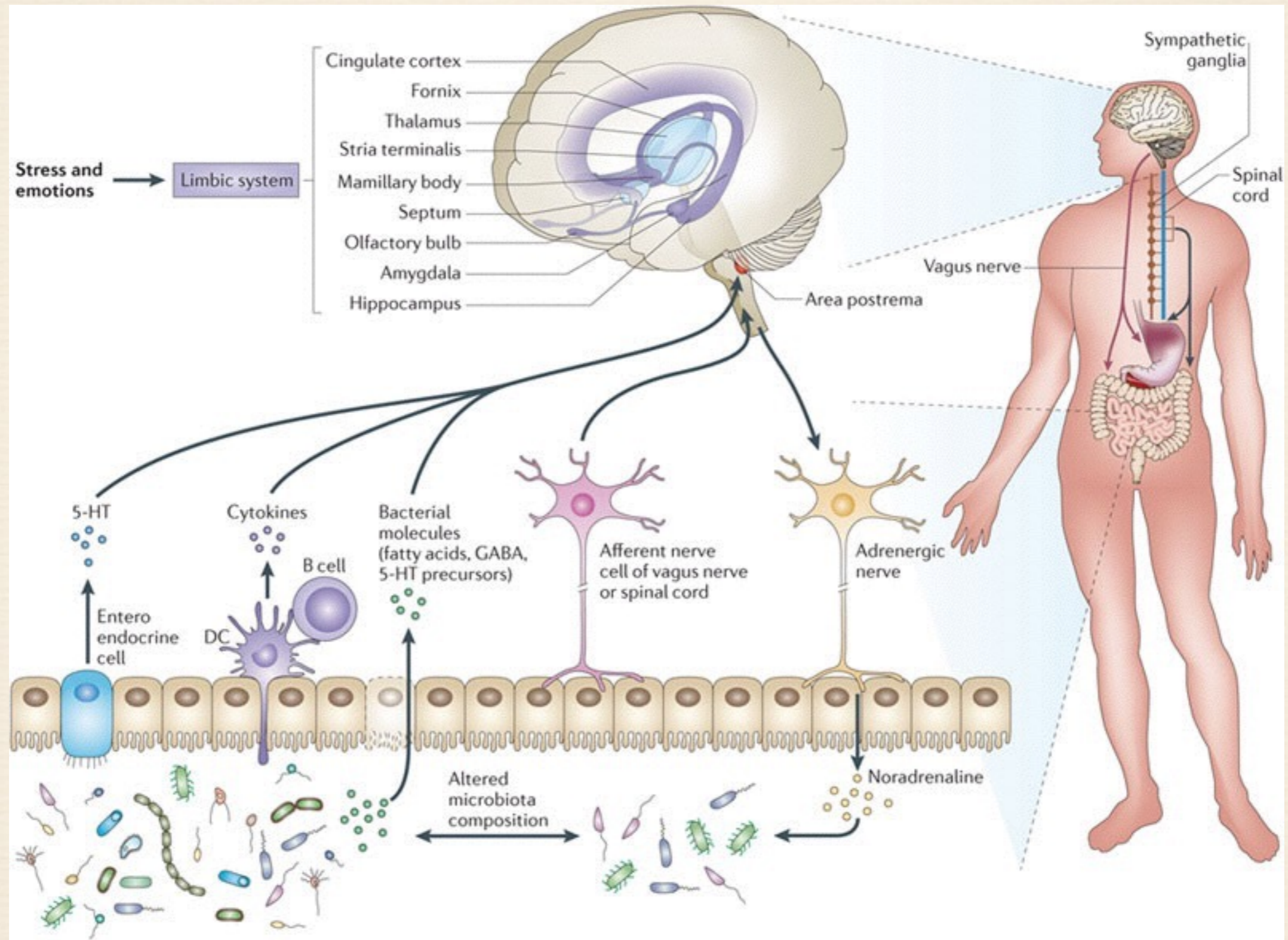
Irritable bowel syndrome (IBS) is an extremely prevalent but poorly understood gastrointestinal disorder. Consequently, there are no clear diagnostic markers to help diagnose the disorder and treatment options are limited to management of the symptoms. The concept of a dysregulated gut-brain axis has been adopted as a suitable model for the disorder. The gut microbiome may play an important role in the onset and exacerbation of symptoms in the disorder and has been extensively studied in this context.

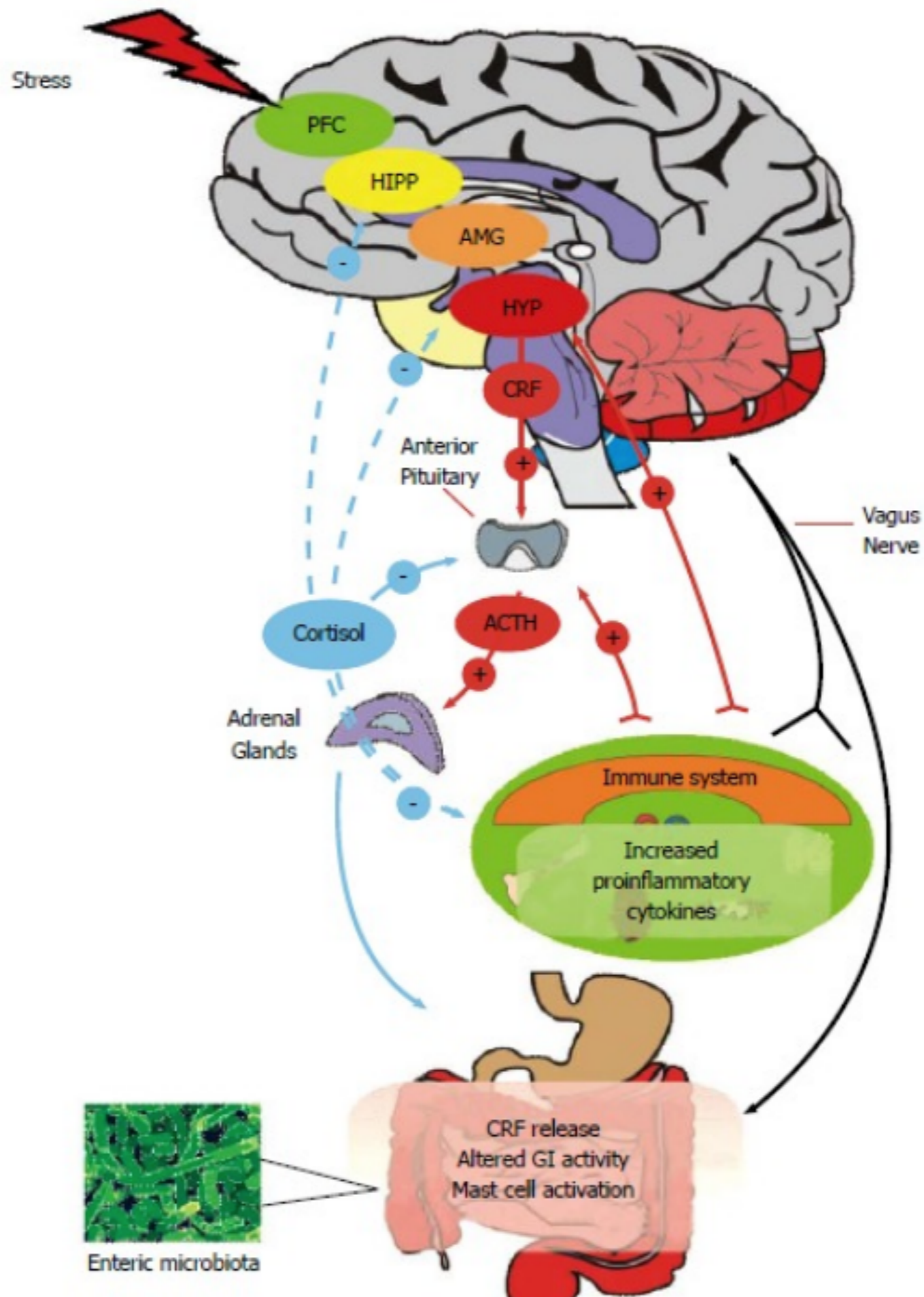
Moreover, it has been reliably demonstrated that manipulation of the microbiota can influence the key symptoms, including abdominal pain and bowel habit, and other prominent features of IBS.

Irritable bowel syndrome (IBS) is the most common functional gastrointestinal (GI) disorder accounting for up to 50% of visits to general practitioners for GI complaints

- ❖ There is a lower abundance of mucosa-associated Bifidobacteria in diarrhea predominant IBS (IBS-D) compared to constipation predominant IBS (IBS-C) patients
- ❖ Of note is the report in healthy adults that subjects who experienced pain, assessed by questionnaire, over the 7 wk duration of the study had over five-fold less Bifidobacteria compared to those without pain
- ❖ From a therapeutic perspective, certain probiotic strains, such as *B. infantis* 35624 and *Lactobacillus acidophilus*, can ameliorate colonic hypersensitivity in animal models

The Gut-Brain Axis

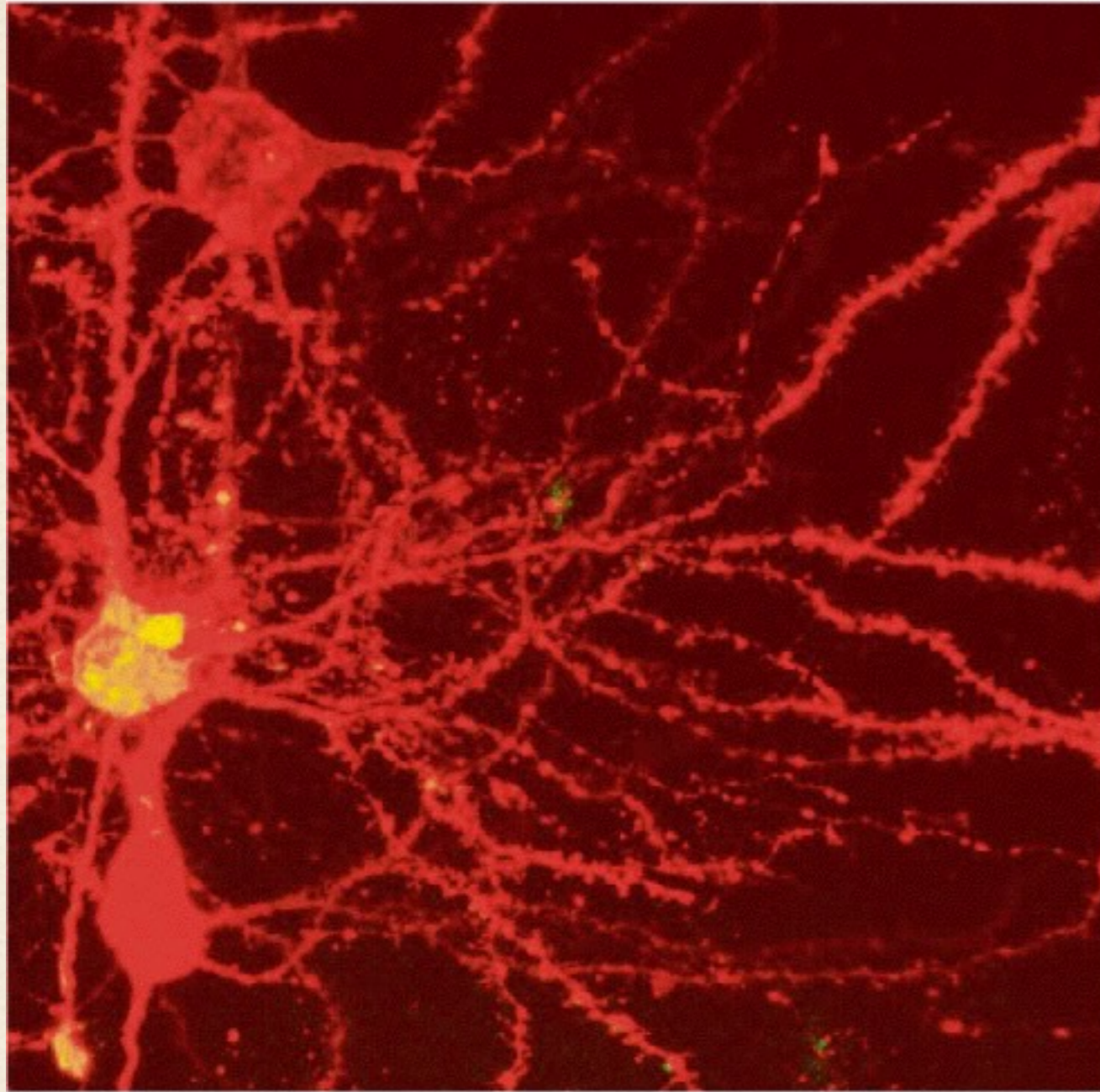




Psychiatric Co-morbidity

- ❖ It is well established that psychiatric comorbidities, particularly anxiety and depression, are common among patients with IBS
- ❖ Anti biotics associated with Depression

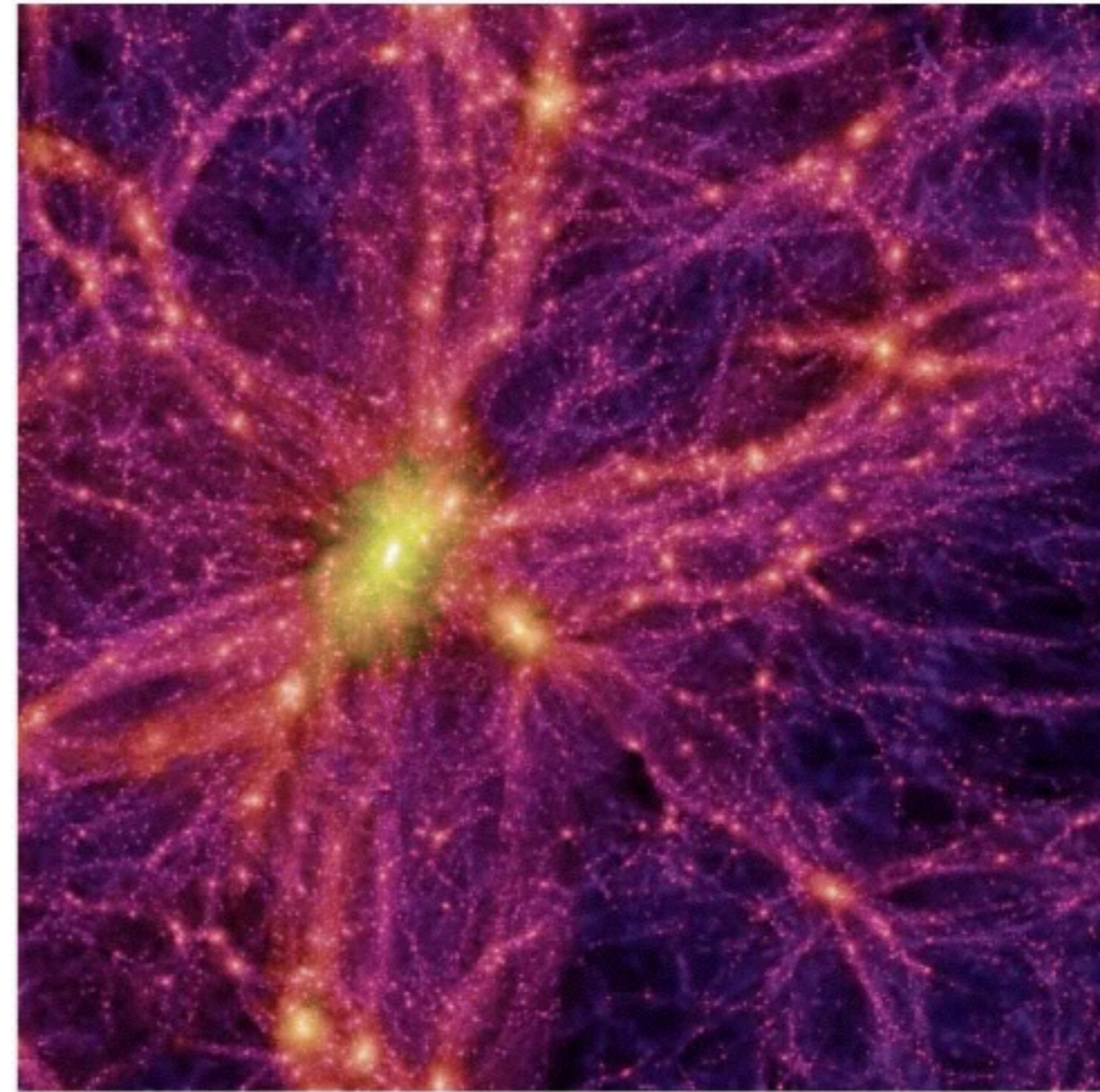
One is only micrometers wide. The other is billions of light-years across. One shows neurons in a mouse brain. The other is a simulated image of the universe. Together they suggest the surprisingly similar patterns found in vastly different natural phenomena. *DAVID CONSTANTINE*



Mark Miller

Mark Miller, a doctoral student at Brandeis University, is researching how particular types of neurons in the brain are connected to one another. By staining thin slices of a mouse's brain, he can identify the connections visually. The image above shows three neuron cells on the left (two red and one yellow) and their connections.

Source: Mark Miller, Brandeis University; Virgo Consortium for Cosmological Supercomputer Simulations; www.visualcomplexity.com



Virgo Consortium

An international group of astrophysicists used a computer simulation last year to recreate how the universe grew and evolved. The simulation image above is a snapshot of the present universe that features a large cluster of galaxies (bright yellow) surrounded by thousands of stars, galaxies and dark matter (web).

The New York Times

on the left (two red and one yellow) and their connections.

brain, he can identify the connections visually. The image above shows three neuron cells

regions in the brain are connected to one another. By staining thin slices of a mouse's

thousands of stars, galaxies and dark matter (web).

present universe that features a large cluster of galaxies (bright yellow) surrounded by

from the universe grew and evolved. The simulation image above is a snapshot of the

❖ As above so below

❖ The macrocosm and the
microcosm

❖ We live in this world
and.....This world lives in us

Symptoms of IBS

- ❖ abdominal pain and cramps, which may come in "on-again, off-again" bouts or as a continuous dull ache.
- ❖ constipation or diarrhea, or alternating periods of both.
- ❖ urgent need to have a bowel movement.
- ❖ excessive gas.
- ❖ bloating.
- ❖ changes in bowel habits.
- ❖ mucus in the stool.

Flatulence is defined in the medical literature as "flatus expelled through the anus" or the "quality or state of being flatulent", which is defined in turn as "marked by or affected with gases generated in the intestine or stomach; likely to cause digestive flatulence".

Rubrics

7	Puls.	Green
7	Merc.	Blue
7	Sulph.	Blue
7	Colch.	Green
7	Phos.	Blue
7	Bry.	Green
7	Am-m.	Blue
7	Bell.	Green
7	Nat-m.	Blue
7	Alum.	Blue
6	Nux-v.	Green
6	Ars.	Blue
6	Podo.	Green
6	Aloe	Green
6	Graph.	Blue
7	Calc.	Blue
6	Arg-n.	Blue
6	Cham.	Green
6	Rhus-t.	Green
6	Ant-c.	Blue
6	Carb-v.	Blue
6	Gamb.	Green
6	Coll.	Green
6	Sep.	Red
6	Nit-ac.	Blue
6	Lyc.	Green
6	Chel.	Green
6	Kali-c.	Blue
6	Plb.	Blue
6	Op.	Green
6	Cop.	Green
6	Sil.	Blue
6	Kali-bi.	Blue
6	Lach.	Red

❖ IBS Remedies from RW: Irritable bowel (58): abrot., aloe, ango., aq-tun., arg-n., ars., asaf., bals-p., bani-c., brahmi, calc., calc-p., calc-sil., carb-v., carc., cench., cere-b., chin., coll., coloc., cupr-acet., ferr-ar., ferr-i., ferr-p., foll., 2gaert., grat., ham., kali-bi., lac-d., lampr-s., light-ven., lil-t., lyc., mag-s., menthol, merc-n., nat-c., nat-m., nat-s., nux-v., osm., phos., barb., plan-m., plat., rhus-g., sal-ac., sid-al., spect., staph., stry., tann-ac., thuj., 3Torul., ubul., vib., wh-ch-b.

Nux vomica

rectum; dysentery; diarrhea, without (1) *

rectum; constipation; alternating with diarrhea; purgatives, after abuse of (1) *

abdomen; rumbling noise; morning; stool, before; diarrhea (1) *

rectum; constipation; diarrhea; with (1) *

rectum; diarrhea; ginger, after (1) ***

rectum; constipation; urging; ineffectual urging and straining; stool; after usual (2) ****

abdomen; hernia; umbilicus; constipation, with (2) *

abdomen; pain; diarrhea would appear, as if; cold, from taking a (2) ****

rectum; constipation; bilious temperaments, in (2) ****

rectum; diarrhea; drugs, after (2) ***

rectum; constipation; chocolate, after (2) *

rectum; constipation; hernia, with umbilical (2) *

rectum; constipation; peristaltic action, from irregular (2) ****

Ign

rectum; constipation; cold agg. (1) ***: 3**Ign**.¹³⁷

rectum; constipation; neurasthenia, in (1) ***: 3**Ign**.¹³⁷

rectum; constipation; prolapse, in (15) ***: 3**Aesc**.¹⁰², alum.¹⁰², am-c.¹³²⁶, bry.¹³²⁶, 3**Coll**.²², ferr.¹⁰², 3**Ign**.¹⁰², lyc.¹⁰², med.¹⁰², podo.¹⁰², ruta¹⁰², sep.¹⁰², sil.¹⁰⁰⁰, stann.¹⁰², sulph.¹⁰²

rectum; constipation; riding in a carriage, while (2) ***: 3**Ign**.⁴⁰, 3**Plat**.²²

rectum; constipation; urging; with; erection, with (2) ***: 3**Ign**.¹³⁷, 3**Thuj**.¹³⁷

rectum; diarrhea; night; agg.; fright agg. (1) *: ign.⁵⁴

rectum; diarrhea; grief, after (11) ***: calc-p.⁵⁸, 3**Coloc**.⁵⁸, 3**Gels**.⁵⁸, 2hoch.²⁶⁹, 3**Ign**.¹⁰, 2kali-br.⁸, merc.⁵⁸, op.⁵⁸, 3**Ph-ac**.¹⁰, 2staph.¹⁰, sulph.⁸⁰⁹

rectum; pain; constipation, with; children, in (4) *: ign.¹⁰², lyc.¹⁰², sulph.¹⁰², verat.²²

rectum; pain; constipation, with; pain in rectum, with persistent (14) ***:

3**Aesc**.¹⁰², aloe¹⁰², alumn.¹⁰², caust.¹⁰², hydr.¹⁰², 3**Ign**.¹⁰², lyc.¹⁰², mur-ac.¹⁰², 3**Nat-m**.¹⁰², 3**Nit-ac**.¹⁰², rat.¹⁰², sep.¹⁰², sulph.¹⁰², thuj.¹⁰²

Strychninum

- ❖ Nux-vom on Steroids
- ❖ the toxic alkaloid in the loganacea family

Aloe

rectum; diarrhea; forenoon; ten am.; ten pm., until (1) *

abdomen; pain; morning; noon, until; diarrhea, after (1) *

abdomen; pain; forenoon; ten am.; noon, until, after diarrhea (1) *

abdomen; pain; cramping, gripping; forenoon; ten am.; noon, until, after diarrhea (1) *

rectum; diarrhea; old people, in; colic, in (1) ****

rectum; diarrhea; dysentery, after (1) ***

rectum; diarrhea; beer; agg.; stopping drinking (1) *

rectum; diarrhea; midnight; after; two am.; nine am. or ten am., until (1) *

rectum; constipation; weather; cloudy, in (1) ***

rectum; flatus; constipation, with (2) **

rectum; diarrhea; natural stool in evening (2) *

rectum; constipation; difficult stool; urination amel. (2) *

rectum; constipation; eaters, of large (2) *

rectum; constipation; urging; with; irresistible (2) ***

Croton Tiglium

mind; fear; disease, of; diarrhea, in (1) ***

abdomen; swashing, splashing noise; night, during diarrhea (1) *

abdomen; swashing, splashing sensation; night, during diarrhea (1) *

rectum; pain; dragging; diarrhea, as from (1) ***

skin; eruptions; vesicles; diarrhea, in (1) **

generalities; weakness; sudden; diarrhea, in (1) *

rectum; diarrhea; milk; amel., warm (2) *

abdomen; pain; diarrhea would appear, as if; flatus amel. (2) *

rectum; diarrhea; alternating with; eruptions (3) *

rectum; diarrhea; rest amel. (4) *

head; brain; diarrhea, from suppressed (6) *

rectum; pain; pressing; diarrhea, as from (7) ***

Momordica

MOMORDICA BALSAMICA

(Balsam Apple)

PHARMACY - mom-b. Momordica balsamica. Balsam apple. Momordica balsamina. N.O. Cucurbitaceae. Momordica. Tincture of fresh ripe fruit.

ABDOMEN: Griping, general colic pains, starting from back and spreading over whole abdomen, piercing, labor-like pains in hypogastrium. (Accumulation of flatus in splenic flexure of colon, rumbling.)

Momordica balsamum; of this we have but one characteristic symptom, and that is accumulation of flatus in the splenic flexure of the colon, precisely like Lycopodium. It is a very convenient thing to know this.

abdomen; pain; bowels; colon; splenic flexure (2) : 3**All-c.**_{Farr}, mom-b._{Boer}

abdomen; flatulence; incarcerated; splenic flexure of colon (1) : mom-b._{Alle}

abdomen; flatulence; colon; sigmoid flexure (1) : 3**Sulph.**_{Farr}

abdomen; flatulence; colon; splenic flexure (5) : 3**All-c.**_{Farr}, cadm._{Hath}, kali-c._{Boe},
3**Lyc.**_{Farr}, 3**Mom-b.**_{Alle}

abdomen; rumbling noise; colon, splenic flexure (2) : 3**Lyc.**_{Farr}, verb._{Boe}

abdomen; distension; colon; splenic flexure, with rumbling (2) : 3**Lyc.**_{Farr},
mom-b._{Alle}

Gambogia

mind; sadness; diarrhea, in (11) ***

mind; sadness; diarrhea, in; chronic (5) ***

teeth; coldness; diarrhea, in (1) *

abdomen; pain; cutting; umbilical region; stool; before; diarrhea (1) *

rectum; diarrhea; old people, in; weather, in warm (1) ***

rectum; diarrhea; sweets, after (11) ***

rectum; diarrhea; weather; warm, in; hot; old people (1) *

Arg-nit

rectum; diarrhea; sour food; amel. (1) ***: 3**Arg-n.**⁵⁸

rectum; diarrhea; imagination, from exalted (1) ***: 3**Arg-n.**⁵⁸

abdomen; distension; children, in; diarrhea, in (1) *: arg-n.¹¹⁶

abdomen; pain; sore, bruised; hypochondria; diarrhea, in (1) ****: 4**ARG-N.**⁵⁸

rectum; diarrhea; night; agg.; coughing at daytime (1) *: arg-n.⁸

rectum; diarrhea; thoughts, from (1) *: arg-n.⁵⁴

stomach; vomiting; mucous; diarrhea, in (1) ****: 4**ARG-N.**³⁶

rectum; diarrhea; excitement, emotional, agg.; theatre, as before (1) ****:

4**ARG-N.**⁵⁸

abdomen; pain; drawing; stool; during; diarrhea (1) ***: 3**Arg-n.**³⁶

abdomen; pain; hypochondria; diarrhea, in (2) ****: 4**ARG-N.**⁵⁸, 3**Ars.**¹

rectum; constipation; urging; ineffectual urging and straining; stool; followed by involuntary (2) *: agar.¹¹¹, arg-n.¹¹¹

rectum; diarrhea; lying; agg.; side, on; left (3) ***: 3**Arg-n.**³⁶, arn.³⁶, 3**Phos.**³⁶

stomach; vomiting; stool; after; diarrhea (3) ***: 3**Arg-n.**³⁶, eug.⁸⁵, sant.⁸⁵

Arsenicum

rectum; diarrhea; disorganization, from (1) *: ars.¹⁰²

abdomen; pain; cutting; hypogastrium; diarrhea, in (1) ***: 3**Ars.**¹

abdomen; pain; cutting; tearing; stool; during, diarrhea (1) ***: 3**Ars.**³⁶

abdomen; pain; cramping, gripping; hypogastrium; stool; during; diarrhea (1)

*: ars.¹

abdomen; pain; wandering; diarrhea, in (1) *: ars.³⁶

rectum; pain; cutting; stool; during; diarrhea (2) ****: 4**ARS.**⁵⁸, 3**Merc.**³⁶

rectum; diarrhea; midnight; after; noon, until (2) *: ars.⁵⁸, cist.⁵⁸

rectum; diarrhea; meat, from; putrescent (2) *: ars.¹⁰², crot-h.¹⁰²

rectum; diarrhea; rancid food, after (2) ***: 3**Ars.**⁵⁸, carb-v.⁵⁸

rectum; diarrhea; heart complaints, in (3) ***: 3**Ars.**⁴⁷, lob.⁷⁶, 3**Tab.**⁴⁷

rectum; diarrhea; warmth; amel.; external (3) ***: 3**Ars.**⁵⁸, 3**Hep.**⁵⁸, 3**Nux-m.**³⁶

rectum; diarrhea; burns, after (3) *: ars.⁵⁸, calc.⁸, corv-c.²⁵⁸

abdomen; pain; tearing; stool; during; diarrhea (3) ***: 3**Ant-t.**²², 3**Ars.**³⁶, bov.

Verat-a

rectum; constipation; fainting, with (1) *: verat.¹⁰²

rectum; diarrhea; chill; before (1) *: verat.¹²²

rectum; constipation; weather; cold, in (1) *: verat.¹⁰²

stomach; vomiting; stool; during; diarrhea; violent and profuse (1) *: verat.⁸

rectum; pain; constipation, with; children, in; nursing children (1) ****:

4VERAT.²²

rectum; diarrhea; cucumbers, after (2) *: all-c.¹⁴⁴, verat.⁵⁸

abdomen; pain; cutting; morning; stool; during; diarrhea (2) ***: ambr.³⁶,

3Verat.³⁶

abdomen; pain; drawing; diarrhea, as after (2) *: bar-acet.³⁶, verat.³⁶

rectum; diarrhea; neuralgia, in (2) *: spig.⁸, verat.⁸⁵

rectum; diarrhea; painful; children, in (2) *: sabad.¹⁰², verat.⁸⁵

rectum; constipation; hypochondriasis, in (3) ***: **3**Nat-m.⁴⁷, **3**Sulph.⁵⁴, **3**Verat.⁵⁴

stomach; hiccough; stool; during; diarrhea (4) ***: ang.⁵⁸, cinnam.⁵⁸, hyos.¹⁰,

3Verat.⁵⁸

Colocynthus

abdomen; pain; evening; stool; amel.; diarrhea (1) *: coloc.³⁶

rectum; diarrhea; cold, as after taking (1) *: coloc.¹

rectum; constipation; cheese, after (2) ***: 3**Coloc.**⁴⁷, crot-c.²¹⁴

abdomen; pain; cramping, gripping; umbilical region; diarrhea; before (3) *: coloc.⁵⁸, mag-c.¹, plat.⁵⁸

rectum; diarrhea; coffee; amel. (4) ***: brom.²², 3**Coloc.**⁵⁸, corn.⁵⁸, phos.²²

rectum; diarrhea; pain; after; stomach, in, after (4) ***: 3**Coloc.**³⁶, hell-f.⁸⁵, hist.⁴⁶¹, ven-m.²¹⁴⁷

rectum; diarrhea; lemonade, after (4) ***: ant-c.⁵⁸, 3**Cit-ac.**⁵⁸, 3**Coloc.**²², 3**Phyt.**⁵⁸

rectum; constipation; smoking amel. (4) *: cann-s.³⁶, coloc.¹¹, lach.³⁶, tab.³⁶

rectum; diarrhea; drinks; agg.; cold; water (6) ***: ars.⁸, carb-v.⁸, 3**Coloc.**²², lyc.⁸, sep.⁵, sulph.⁸

Dys-co

head; pain, headache; violent; diarrhea, in (1) *: dys-co.¹³⁶

rectum; diarrhea; midnight; after; three am.; agg.; six am., until (1) *: dys-co.⁷²⁶

rectum; diarrhea; cold; becoming, after; menses, during (1) *: dys-co.⁷²⁶

rectum; diarrhea; headache; during (4) *: bell.⁵⁸, dys-co.¹³⁶, rhus-t.¹⁰, zinc.¹⁶²

Morg/ Morg-g

rectum; constipation (831) ***: abies-c.³⁶, **3Abies-n**³⁶, abr.⁵²⁶, abrom-aug.³¹⁵⁸, **3Abrot**⁵⁶, absin.¹⁰, acal.⁹⁷, **2acan-pl**⁵¹⁰, **3Acet-ac**³⁶, **4ACON**⁵, acon-ac.²³², acon-l.⁸⁵, adam.²²², **3Adeps-s**⁷⁰⁴⁵, **2adon**¹⁰²⁸, aegle.³¹⁵⁸, **2aego-p**³²⁷, **4AESC**³⁶, **2aesc-g**³⁶, **4AETH**³⁶, **4AGAR**⁵, agki-p.¹²⁰², **3Agn**⁵, **2agri**¹¹²⁵, agro.⁸⁵, aids.²⁶⁵, ail.⁵⁸, alco.²¹², **3Alet**⁴⁷, alf.¹⁰⁰, **3All-c**⁵⁸, all-s.³⁶, alli-m.²⁶⁴, allox.¹¹⁹, aln.²⁵, **4ALOE**³⁶, alst-s.¹⁰², **4ALUM**⁵, alum-p.⁵⁸, **4ALUM-SIL**⁵⁸, **4ALUMN**¹¹, **4AM-C**⁵, **4AM-M**⁵, **4AMBR**⁵, **2amet**²¹², aml-n.⁷⁵², **2ammc**³⁶, **3Amph**³⁶, ana-i.²⁷⁴, **4ANAC**¹⁰, **3Anag**⁸, anan.³⁶, **3Ander**³¹⁵⁸, androc.²²², androg-p.³¹⁵⁸, **3Ang**¹, **3Ango**³⁶, **4ANT-C**⁵, ant-m.⁸⁵, **3Ant-s**³⁶, ant-t.⁵, anth.⁸⁵, aphis.³⁶, apiol.⁵⁵, **4APIS**⁵, **4APOC**⁴⁷, **2apoc-a**²⁰¹⁰, apom.¹¹²¹, aq-mar.³⁶, aral.⁸⁵, **3Aral-h**¹⁰², aran.⁸⁵, aran-ix.¹⁴⁹, aran-s.¹⁹², ard-h.⁵⁰⁸, **3Arg**⁵⁸, **3Arg-n**¹⁰, arg-s.²⁰⁵, arge-p.²⁶⁴, arist-cl.¹¹⁹, **4ARN**⁵, **4ARS**¹, ars-h.⁸⁵, **3Ars-i**⁵⁸, **3Ars-met**⁸, ars-s-f.⁵⁸, arund.⁵⁸, **3Asaf**⁵, asar.¹⁰², asc-c.²⁰⁵¹, asc-t.²⁰⁵¹, asim.³⁶, aspart.²⁹⁵, **3Aster**⁵⁴, atista.³¹⁵⁸, atro.²⁰⁵¹, **3Aur**¹⁰, aur-ar.⁵⁸, **2aur-i**⁵⁸, **3Aur-m**⁵⁸, **3Aur-m-n**³⁶, **3Aur-s**⁵⁸, **3Aza**¹⁰⁸⁶, ba-sv.¹³⁶, ba-tn.¹⁴⁹, **4BAC**⁶², **2bacch-a**⁴²⁴, bad.⁵⁸, bamb-a.¹¹⁸⁴, bani-c.²⁰⁴, **2bapt**²⁵, **3Bar-c**⁵, bar-i.⁵⁸, **4BAR-M**¹⁰²⁸, bar-s.⁵⁸, **4BELL**⁵, **2bell-p**¹¹²⁵, **2benz-ac**⁵⁸, **3Berb**³⁶, berb-a.⁸⁵, **3Bism**⁵, blatta.⁴²², boerh.¹⁹², **3Bol**³⁶, bold.¹⁰², **2bor**⁸, bos-s.⁴⁰², botul.⁷², **3Bov**⁵, brach.⁸, bro-s-g.²⁵⁹, **3Brucel**²⁴¹, **4BRY**⁵, bufo.²², bung-f.¹²⁰², buni-o.¹⁴⁹, **2c-di-o**²⁰⁵, **3Cact**³⁶, **2cadm**¹³⁸, **2cadm-i**¹⁴², caesal-s.⁷⁰², cahin.⁵⁸, **3Calad**⁵, **4CALC**⁵, calc-acet.¹⁴², **3Calc-ar**⁸, calc-chln.¹⁰², **3Calc-f**³⁶, calc-i.¹¹, calc-ox.¹¹⁴, **4CALC-P**⁵⁴, **3Calc-s**⁵⁸, **2calc-sil**⁵⁸, calen.⁸⁵, calop-s.²²², **3Camph**⁵, **3Canch**³⁶, cand-a.²³⁹, **2cand-p**²⁸⁵, **3Cann-i**²⁰⁵¹, **4CANN-S**⁵, **4CANTH**⁵, **4CAPS**¹, **4CARB-AC**³⁷, **4CARB-AN**¹, **4CARB-V**⁵, carb-n.⁸⁵, **4CARBN-S**³⁶, **3Carc**¹⁰², **2card-b**¹¹²⁵, **4CARD-M**³⁶, **2care-a**¹¹²⁵, cari.¹¹³⁸, **3Carl**³⁶, carn-g.²⁶⁴, **3Casc**⁸, cass.³⁶, cassi-f.¹⁹², **2cassi-s**¹⁹², cath-a.²⁶⁴, caul.⁵⁸, **4CAUST**⁵, cean.⁷⁶⁴, cedr.²⁰⁵¹, cench.⁵⁸, **2cent-u**¹¹²⁵, cer-o.⁵³¹, cere-b.⁸⁵, **4CHAM**⁵, **3Cheir**¹³⁷, **4CHEL**⁵, chelo.²⁰⁵¹, chen-a.⁸⁰⁷, **2chen-v**⁸, **3Chim**²⁰⁵¹, **4CHIN**⁵, chin-ar.⁵⁸, chin-m.⁸⁵, **2chin-s**¹⁰, chion.⁸⁵, chir-f.⁴²², chlam-t.²⁹⁵, chl-f.²⁰⁵¹, chlor.¹⁹⁷, chloram.¹⁴⁹, chlorpr.¹⁴⁹, choc.²²², chol.⁵⁵, chr-ac.⁵⁸, chr-o.⁸⁵, **3Cic**⁵, cic-m.⁸⁵, **2cich**¹¹²⁵, **3Cimic**⁷⁰⁴⁵, cimx.¹⁰⁹⁴, **3Cina**⁵, cinch.¹⁰, cinis-p.⁴¹⁷, cinnam.⁸⁵, cinnb.⁸⁵, cit-l.⁸⁵, citl-l.¹⁹⁷, clad-r.²⁶⁵, **4CLEM**³⁶, cler-i.³¹⁵⁸, **3Cob**⁵⁸, coc-c.⁵⁸, **3Coca**²⁰⁵¹, **4COCC**⁵, cod.²⁰⁵¹, **4COFF**⁵, coff-t.⁸⁵, **4COLCH**⁵, **4COLL**²⁰⁵¹, **4COLOC**⁵, **4CON**¹, convo-d.⁸⁵, **3Cop**³⁶, cor-r.⁵⁸, cordy-a.⁵⁸⁸, corn.⁵⁸, corn-a.⁸⁵, corn-f.⁸⁵, cortiso.¹¹⁹, cot.⁸⁵, crat.⁹⁹⁹, **3Croc**⁸, **3Crot-c**³⁶, **3Crot-h**¹⁰, croto-t.⁵⁸, cub.⁵⁴, culx.²¹⁵, culx-p.⁴²², cund.⁸⁵, **4CUPR**⁵, **3Cupr-acet**³⁶, **3Cupr-ar**³⁶, cupr-s.⁸⁵, cur.³⁶, curc.¹⁹², **4CYCL**⁸, cyg-c.²²², cymbo-ci.²¹⁸⁴, cyni-c-g.²⁶⁵, **3Cypr**¹⁰², cyrt-p.⁴¹⁸, cyt-l.⁸⁵, **3Daph**¹⁰, **2dict**⁸⁵, **3Dig**²², digin.⁸⁵, **3Dios**²⁰⁵¹, **2diox**²⁰², dirc.⁵⁸, **4DOL**⁸, dor.⁸⁵, dpt.⁵⁸⁸, dros.⁵⁸, dubin.⁸⁵, **4DULC**⁵, dys-co.⁷²⁶, echis-c.⁵⁵, eich-c.¹⁴⁴, **3Elaps**¹¹, **3Elat**⁵⁸, electr.⁸⁵, emb.³¹⁵⁸, enal-c.²⁷³, epig.⁴⁰⁶⁶, epip.¹⁰²⁸, erb.²⁰⁹, erech.³⁶, ery-a.⁵⁸, eryth.⁷⁰⁰, eucal.²⁰⁵¹, **3Eug**¹⁰, euon.⁵⁸, euon-a.⁸⁵, euonin.⁸⁵, **2eup-c**¹¹²⁵, eup-per.⁵⁸, eup-pur.⁵⁸, euph.¹, euph-a.⁸⁵, euph-hy.³⁶, euph-l.⁷⁷, **3Euphr**³⁶, eupi.⁵⁸, excr-can.²⁶⁹, fago.⁴⁰, **3Falco-p**²⁶⁵, **3Fel**⁴⁷, **3Ferr**³⁶, **3Ferr-ar**⁵⁸, ferr-cy.¹⁰², **3Ferr-i**⁵⁸, ferr-m.¹⁰, ferr-p.⁵⁸, ferr-pic.¹¹⁷⁷, ferr-s.⁸, ferr-sil.²⁰⁹, fic-sp.⁶¹⁰, fil.⁸⁵, **3FI-ac**⁸, **3Foen**¹¹²⁵, foll.¹⁴⁹, **3Form**²⁰⁵¹, **3Fran**³⁶, frax.⁵²⁴, **3Fuc**⁸⁵, **3Fum**¹¹²⁵, **3Gaert**¹⁴⁹, galeoc-c.²⁷³, gall-ac.³⁶, galph.⁷⁴⁸, **3Gamb**³⁶, gar-c.¹³⁵⁹, gast.³⁶, **3Gels**⁴⁷, geoc-c.²⁶⁴, ger.⁸⁵, **3Germ**²²², **3Get**⁷⁰⁴⁵, **2geum**¹¹²⁵, **2gink**²¹⁸⁹, gins.⁸⁵, glon.³⁶, **3Glyc**¹⁰², glyc-g.⁵⁸⁷, gnaph.³⁶, goss.¹²², **2gran**¹⁰, **4GRAPH**⁵, **4GRAT**¹⁰, **3Guai**¹⁰, guare.³⁶, guat.¹¹⁹, gymn.²⁰⁵¹, **2haliae-lc**²²², hall.⁸⁵, **3Ham**⁶², hedeo.³⁶, hedy.⁸⁵, helia.³⁶, **3Hell**⁵, helo.⁷⁰⁶, helod-c.²⁰⁵, hema-h.⁷⁵⁰, **4HEP**⁵, her-s.⁸⁵, herin.³⁰⁸, hippo-k.⁴⁴⁴, hippoz.⁵⁸, hir.¹⁴⁴, hist.⁴⁶¹, **2hoch**²⁶⁹, hom.⁵⁸, home.⁸⁵, hura.⁵⁸, **4HYDR**²⁰⁵¹, hydr-ac.¹⁹³, **3Hydr**⁸⁷³, hydro-c.²¹⁴⁷, hydrog.²²², **3Hyos**⁵, hyosin.⁹⁶, **3Hyper**³⁶⁷, ictod.¹⁰²⁸, **2igf**²³², **4IGN**⁵, **2ind**⁵⁷, indg.⁸, **3Indol**⁷², ingluv.⁴⁰, interf.²⁴¹, **4IOD**⁵, iodof.⁸⁵, **3Ip**⁵, **2irid**²²², **4IRIS**²⁰⁵¹, jab.⁵⁸, jac-c.⁵⁸, **4JAL**¹¹²⁵, **3Jatr**⁵⁸, **3Joan**⁷², jug-c.²⁰⁵¹, **2jug-r**¹⁰, just.⁹⁷, **3Kali-acet**³⁶, **3Kali-ar**⁵⁸, **4KALI-BI**¹⁰, **3Kali-br**²⁰⁵¹, **4KALI-C**⁵, **3Kali-chl**⁵⁸, kali-cy.⁸⁵, kali-fcy.⁸⁵, kali-hp.²⁰⁵¹, **3Kali-i**³⁶, kali-l.¹⁰⁷⁴, **3Kali-m**⁸⁵, kali-ma.⁸⁵, **2kali-n**⁵, **3Kali-p**⁵⁸, **4KALI-S**⁵⁸, **3Kali-sil**⁷², kali-sula.⁸⁵, **4KALM**¹¹, **3Kaol**⁷⁰⁴⁵, kiss.³⁶, kola.¹¹⁸⁴, **4KREOS**⁵, kres.¹⁴⁹, kurch.¹⁹², **3Lac-ac**⁵⁸, **3Lac-c**⁵⁸, **4LAC-D**⁸, lac-del.²⁰⁴, **2lac-dr**⁶⁰⁶, lac-eq.²⁰⁴, **3Lac-f**⁵⁵, lac-h.²¹⁴, **2lac-leo**²⁰⁴, lac-v.⁸⁵, **4LACH**⁵, lachn.⁸, **2lact**¹⁰, lam.¹⁰², lam-cy.⁴²², lampr-s.⁴⁶⁷, **3Lap-a**⁵⁸, **2lap-be-e**⁴²⁶, lap-c-b.¹⁹⁴, lap-gr-m.¹⁹⁴, lappa.¹⁰²⁸, lat-h.³⁰¹, latex.²⁶⁵, **4LAUR**⁵, **2lava-e**⁴⁴⁵, **3Lec**⁵⁸, **4LED**⁵, leon.⁵⁰⁸, **2lepro**¹⁹⁷, **3Lept**²⁰⁵¹, leuc-c.⁶⁶⁴, **4LIL-T**³⁶, lim.⁸, **2lina**¹¹²⁵, linu-c.⁸⁵, **2linu-u**¹¹²⁵, lipp.⁸⁵, lith-c.²²⁷, lob.⁵⁸, lob-s.⁸, lol.⁸⁵, loxo-r.²⁰⁵, lsd.²⁶⁵, lup.⁸⁵, lute-o.²⁰⁹, **4LYC**⁵, lycpr.⁸⁵, lycps.²⁰⁵¹, lyss.⁵⁸, **4M-ARCT**⁵, **3M-art**⁵, m-aust.⁵, macrin.⁸⁵, mag-acet.¹¹, **4MAG-C**¹, **4MAG-M**⁵, mag-p.⁸, mag-s.³⁶, magn-gr.⁸⁵, maland.¹⁰⁶⁴, malar.⁸⁵, **3Manc**³⁶, **2mand**³⁶, **3Mang**⁵, mang-acet.¹, mang-m.³⁶, mang-o.⁸⁵, mang-p.²⁰⁹, **2mangi**¹⁹⁷, mant-r.²⁶², marm-a.¹⁹⁴, **4MED**⁸, mel-alt.⁴²², **3Meli**⁴⁰, meli-a.⁸⁵, **4MENY**⁵, meph.¹⁹³, **4MERC**⁵, **4MERC-C**⁵, merc-cy.⁸⁵, merc-d.⁸⁵, **3Merc-i-f**⁵⁸, merc-n.⁸⁵, merc-v.³⁶, **2merl**¹¹²⁵, meteo-a.²⁷³, methylp-h.⁵²³, **4MEZ**⁵, **2mill**¹¹²⁵, mit.²⁰⁵¹, **2mono**³⁵⁸, **2mor-n**¹¹²⁵, **4MORG**¹³⁶, **3Morg-g**¹³⁶, morph.³⁶, **4MOSCH**⁵, **2muc-nas**²³², **3Mur-ac**¹⁰, murx.⁵⁸, musa.³⁶, **2musca-d**⁴⁴⁴, mut.¹³⁶, mygal.¹⁹², **3Myric**³⁶, **2nabal**³⁶, **2nad**²³², naja.³⁶, naja-h.¹²⁰², narcot.⁸⁵, nast.¹⁰², **3Nat-ar**⁵⁸, **4NAT-C**⁵, nat-f.¹¹⁹, nat-glut.⁷⁰⁴, **3Nat-hchl**⁴⁷, **4NAT-L**⁸⁵, **4NAT-M**⁵, **3Nat-n**⁸⁵, nat-ox.²³², **4NAT-P**⁵⁸, **4NAT-S**⁵⁸, **3Nat-sil**⁵⁸, nelum.²⁰⁴, neon.²²², nept-m.⁴³⁰, **2nic-r**²⁸⁷, **4NICC**⁵⁸, nicc-s.¹⁰², nicot.⁸⁵, **2niob**⁵⁶⁵, **4NIT-AC**⁵, nit-m-ac.⁸⁵, nit-s-d.⁸⁵, **4NUX-M**⁵, **4NUX-V**⁵, **3Nyct**⁷⁷, oci.⁸⁵, oci-g.³¹⁵⁸, oci-s.¹¹⁹, **4OENA**⁵⁸, ol-an.⁵⁸, ol-j.²⁰⁵¹, olea.²²², **4OLND**¹, onc-t.²²², onis.³⁶, **4OP**⁵, oplo-h.⁵⁶⁶, **2orig**¹¹²⁵, orni.⁶⁶⁰, osm.⁵⁸, **3Ox-ac**³⁶, ozone.²²⁷, paeon.⁵⁸, **3Pall**⁴⁷, par.⁵, **3Paraf**⁷⁷, pareir.⁵²⁷, **2parth**¹⁹⁷, passi.⁹⁹¹, paull.³⁶, paull-p.³⁶, ped.²⁰¹⁶, peg-h.²⁸², pen.⁸⁵, perla.⁴²², peti.³⁶, **3Petr**⁵, **3Ph-ac**⁵, phasc-c.³⁰², phel.⁵⁸, pholc-ph.⁶⁰⁸, **4PHOS**¹⁰, phyll-a.²⁸⁰, **3Phys**²⁰⁵¹, **4PHYT**³⁶, **2pic-ac**⁴⁷, pier-b.²³³, pin-l.³⁶, pin-s.³⁶, pip-n.³⁶, **2pitu-a**¹⁶⁴, pitu-gl.²¹⁶, plac.²⁶⁹, **3Plan-m**⁷⁰⁴⁵, **4PLAT**⁵, **4PLB**⁵, **3Plb-acet**¹⁰², plb-chr.⁸⁵, plect.³⁶, plumbg.³⁶, **2plumbg-eu**¹¹²⁵, **2plut-n**²⁶⁹, **4PODO**³⁶, **2pol-v**¹¹²⁵, polyg.²⁰⁵¹, polym.¹¹¹, **3Polyp-p**³⁶, polyst.²¹⁴, pop-c.⁸⁵, **2posit**²⁶⁵, predni.³³¹, **3Prot**¹³⁶, **2prun**¹⁰, psil.¹⁶⁴, **4PSOR**³⁶, **3Ptel**³⁶, **4PULS**⁵, **3Puls-n**³⁶, **2pyre-p**¹¹²⁵, **3Pyrog**⁵⁶, querc.⁸⁵, **3Querc-r**⁸⁵, **2rad-br**⁸⁵, ran-b.⁵, ran-s.⁵, **3Raph**⁵⁸, **4RAT**³⁶, ratt-n.²⁰⁴, reser.¹⁴⁹, rham-cal.⁷², **4RHAM-CATH**⁸⁵, **4RHAM-F**³⁶, **3Rham-p**⁸⁵, **4RHEUM**⁵, **4RHOD**⁵, rhodi-o-n.⁸⁵, rhus-d.⁸⁵, rhus-g.³¹⁰, **4RHUS-T**⁵, rhus-v.¹⁰⁹⁴, rib-ac.¹⁴⁹, **4RIC**³⁶, rob.⁵⁸, **2ros-ca**⁶⁷⁰, ros-ca-a.²⁰⁴, **2ros-g**²⁰⁴, **3Rumx**³⁶, rumx-a.⁸⁵, **4RUTA**⁵, **4SABAD**⁵, sabal.⁹⁹⁹, **3Sabin**⁵, **2sac-alb**²², sac-l.⁸⁵, **2sal-ac**⁴⁷, **2salx-f**²⁶⁵, salx-m.¹⁰², salx-n.⁸⁵, sama-m.²⁰⁹, sama-o.²⁰⁹, **3Samb**¹³⁷, **2samb-e**¹¹²⁵, **2sang**¹⁰, **4SANIC**⁵⁶, sant.²⁰⁵¹, **3Sap-sod**⁷⁰⁴⁵, sapin.⁸⁵, sapo.⁷², saroth.²¹⁰⁹, sarr.⁸, **4SARS**¹, scam.⁸⁵, scol.¹¹⁴², **2scorp**²⁶⁹, **3Sec**³⁴, **4SEL**⁵, **3Senec**⁵⁸, senec-j.⁸⁵, **3Seneg**¹⁰, **4SENN**⁸⁵, **4SEP**⁵, **2sia-c**⁵¹⁹, sid-al.²⁷⁸, **4SIL**⁵, sil-mar.⁸⁵, sile-c.³⁰⁸, sin-a.⁸⁵, **3Sin-n**⁸, sinusin.²³², **3Slag**⁸⁵, **3Sol-m**⁸⁵, **3Sol-n**³⁶, **2sol-t**¹¹²⁵, **3Sol-t-ae**³⁶, **3Solid**⁷⁹⁵, soph-m.⁴²², spect.²⁷¹, **3Spig**¹, spira.⁸⁵, spirae.⁸⁵, **3Spong**⁵, **2squill**⁵, **4STANN**¹, **4STAPH**¹, **2stel**¹²⁴², stict.⁸, still.³⁶, **4STRAM**⁵, **4STRONT-C**⁵, **4STRY**⁵⁸, **4SUL-AC**⁵, **3Sul-i**³⁶, sulfon.⁸⁵, **3Sulo-ac**³⁶, **4SULPH**¹, sumb.²⁰⁵¹, syc-co.¹³⁶, sym-r.¹⁰², **2symp**¹⁰², **3Syph**⁸⁵, **3Tab**³⁶, **2tama**¹¹²⁵, tanac.²⁰⁵¹, tann-ac.⁸⁵, **3Tarax**⁵, **4TARENT**³⁶, tarent-c.¹¹¹¹, tax.³⁰³, tax-br.²⁸⁷, teg-a.⁴⁰¹, tela.¹⁹², tell.⁵⁸, telo-s.⁴²², tep.⁵⁸, **3Ter**⁵⁸, **3Tere-ch**³¹⁵⁸, term-a.¹⁹², term-c.¹⁹², teucr.¹⁹⁷, thal.¹⁴⁴, thal-s.³⁶, **2thea**³⁶, **3Ther**¹⁰, thio-ac.²³², **2thlaspi**²⁹, **4THUI**¹, thymn.²⁴¹, thymol.¹¹⁹, **3Thyr**⁸⁵, til.⁵⁸, tong.⁸⁵, **3Torul**⁵⁸, **2trach-am**⁷⁰¹, **3Trich-d**⁷⁰⁷, **3Trif-p**³⁶, tril.⁸⁵, tril-c.³⁶, trinit.⁷², trio.¹⁰², **3Trom**⁸, **3Tub**³⁵⁴, tub-m.¹⁴⁹, turm-w.²²⁷, **2turq**²⁶⁴, tus-p.⁴⁰, tyto-a.⁶⁰⁹, ulm.⁸⁵

Torula

	Bry.	Nux-v.	Aloe	Nat-m.	Op.	Torul.	Podo.	Calc-p.	Plb.	Merc.	Alum.	Zinc.	Sep.	Lvc.
Total	29	29	27	25	20	12	26	24	20	18	17	17	16	15
Rubrics	9	9	9	9	9	9	8	8	8	8	8	8	8	8
Kingdoms	Green	Green	Green	Blue	Green	Light Green	Green	Blue	Blue	Blue	Blue	Blue	Red	Green
<u>head; internal; constipation, with (61)</u>	Black	Black	Black	Purple	Black	Cyan	Purple	Purple	Purple	Purple	Cyan	Cyan	Cyan	Cyan
<u>head; pain, headache; constipation, with (53)</u>	Black	Purple	Black	Purple	Cyan	Cyan	Purple	Purple	Purple	Cyan	Cyan	Blue	Cyan	Cyan
<u>abdomen; pain; stool; before; diarrhea (122)</u>	Purple	Purple	Purple	Cyan	Cyan	Cyan	Purple	Purple	Cyan	Cyan	Cyan	Cyan	Cyan	Cyan
<u>abdomen; stool; before; diarrhea (135)</u>	Purple	Purple	Purple	Purple	Cyan	Cyan	Purple	Purple	Cyan	Cyan	Cyan	Cyan	Cyan	Cyan
<u><u>rectum; constipation (831)</u></u>	Black	Black	Black	Black	Black	Purple	Black	Black	Black	Black	Black	Black	Black	Black
<u>rectum; constipation; children, in (68)</u>	Purple	Black	Cyan	Purple	Purple	Blue	Purple	Cyan	Purple	Cyan	Black	Purple	Purple	Blue
<u>rectum; constipation; excitement, emotional, agg. (15)</u>	Cyan	Cyan	Cyan	Cyan	Cyan	Cyan	White	White	White	White	White	White	White	White
<u>rectum; diarrhea (965)</u>	Black	Black	Black	Black	Black	Cyan	Black	Black	Black	Black	Black	Black	Black	Black
<u>generalities; stool; before; diarrhea (155)</u>	Purple	Purple	Purple	Purple	Cyan	Cyan	Purple	Purple	Cyan	Purple	Cyan	Cyan	Cyan	Cyan